

Methodist Hospital System's OB Link Application Setup Instruction

*** IMPORTANT NOTE****

This procedure may require your machine to be rebooted.
Please save your work and close all open applications before proceeding.

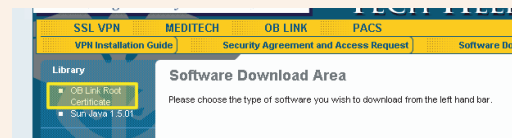
1. Open the Internet Explorer Browser and type:
<http://mhstechhelp.com> into the "Address bar".



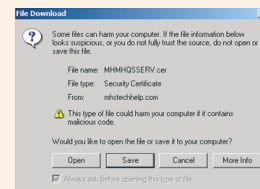
2. Select "OB Link" on the page. Then select the "Software Download Area".



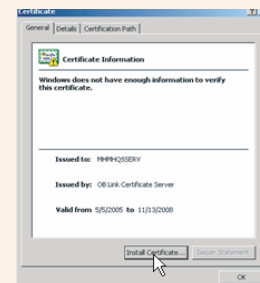
3. On the page's menu left click to select the "OB Link Root Certificate".



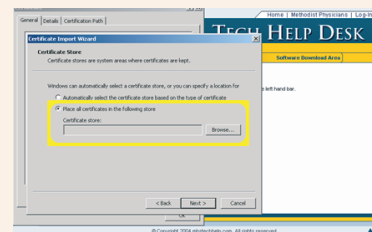
4. Click "Open" for Windows 2000 or "Save" for Windows XP to begin the file download. This might take some time depending on your internet connection and machine's processor speed.



5. Click "Install Certificate" then "Next" on the "Certificate Import Wizard" dialog box.

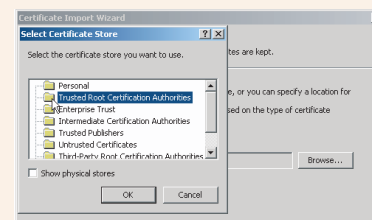


6. Select "Place all Certificates in the following store" then click on "Browse".

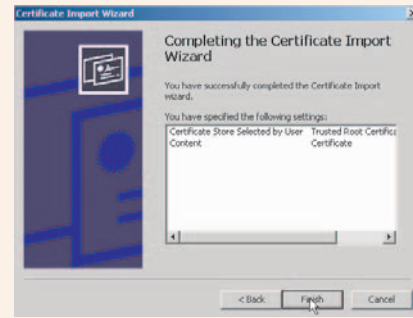


7. Highlight "Trusted Root Certification Authorities" then click "Okay".

8. Click "Next".

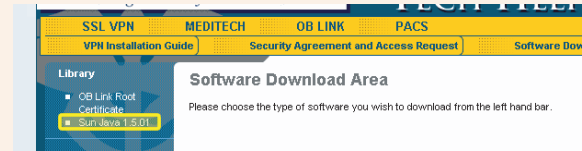


9. Click **"Finish"**



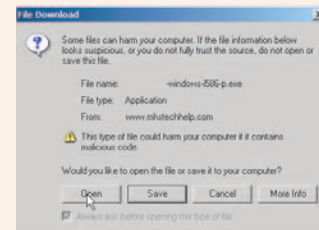
10. Click **"Okay"** on the two dialog boxes to complete the Certificate import.

11. Click on the browser window containing <http://mhstechHelp.com>.



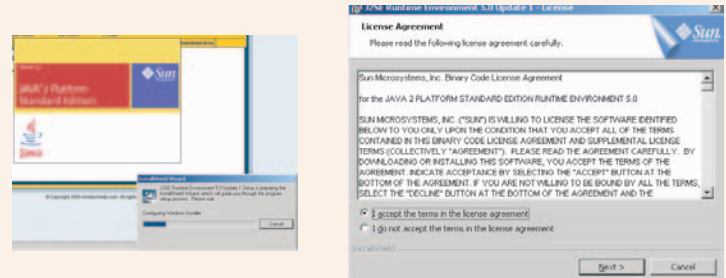
12. Click on the **Sun Java** link.

13. Click **"Open"** for Windows 2000 or **"Save"** for Windows XP to begin the file download. This might take some time depending on your internet connection and machine's processor speed.



14. The installation will begin.

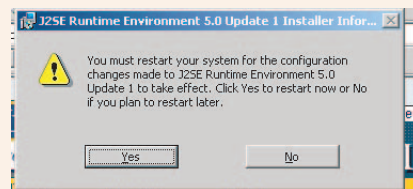
15. Click the **"I accept the terms of the..."** radio button then click **"Next"** to continue the installation.



16. Click **"Finish"** to complete the installation.



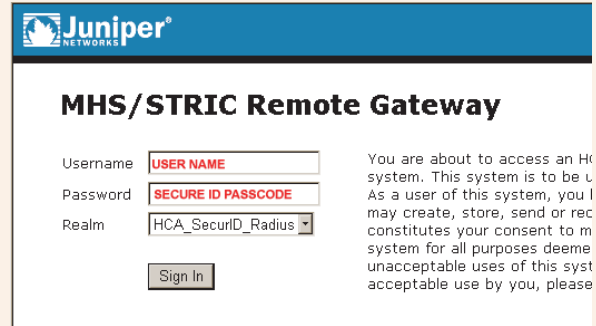
17. At this point you may receive an indication that your machine needs to re-boot. Please close all open applications and then re-start the machine.



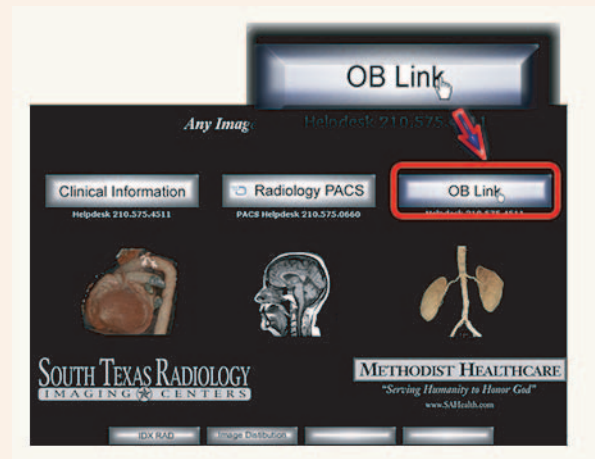
18. Double-click the VPN shortcut that was placed on the computer's desktop during the VPN installation to connect to the MHS / STRIC Remote Gateway (VPN).

19. Enter the **Gateway Username** supplied into the Username field.

20. Press the "TAB" key on your keyboard and enter the **RSA Secure ID PIN/Passcode** into the password field.

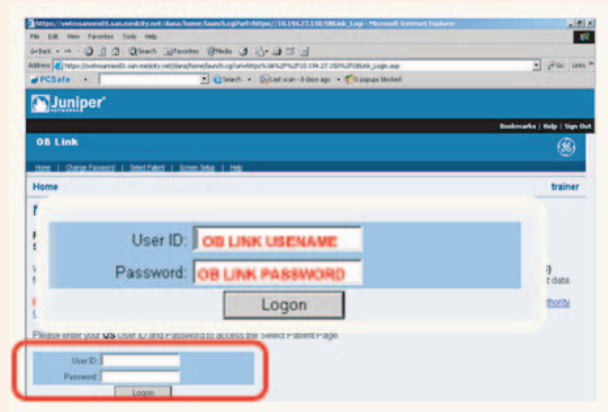


21. The introductory Web Enabled Applications page will load. Click the "OB Link" icon to launch the application.



22. Enter your **OB Link Application Username**.

23. Press the "TAB" key on your keyboard and enter the **OB LINK Application Password** provided into the web browser to logon.



The setup and logon is now complete!